

SMALL ON HASSLE
BIG
ON SOLUTIONS



Small on hassle, **big on solutions.**

BORN PROBLEM SOLVERS



Handling complex projects and out of gauge cargo can be a complicated business. Get it wrong and it can cause all sorts of problems. That's why here at Allseas Global Logistics, we're more than just a logistics company.

Based in the UK, we operate worldwide across land, sea and air. We're born problem solvers who live and breathe the big shipments. Thanks to a wealth of in-house expertise and experience, we're trusted worldwide to move your cargo wherever it needs to go, on time and on budget.

Put simply, we're here to deliver hassle-free logistics. No matter the height, width, weight or distance, we're determined to meet the challenge. There isn't a problem we can't solve. And no 'standard' answers. To us every single job is unique. We love coming up with new ways to solve your logistical problems and find the fastest, safest, most efficient way of getting your cargo from A to B. Even if we have to go via X, Y and Z. No job is too big. No problem too small. You're depending on us – and we never forget it.

TRUSTED EXPERTISE

As one of the most respected forwarders in specialist out of gauge cargo, we are experts in solving the big shipping problems. With over 25 years of knowledge and understanding across our group, we've built up a wealth of unrivalled expertise and pride ourselves on handling the most challenging, time-critical deliveries.

From start to finish, we'll work with you to plan ahead, saving you time and money before your shipment even reaches the starting line. Think of us more as logistics advisors than order takers. We'll be on hand throughout to deliver safe, swift solutions that respect the environment, bringing a global understanding of the logistics world few can match. Our experts are ready to dismantle, assemble, pack, repack, consolidate and transport awkward, heavy and supersize cargoes. While our independent surveyors, cargo handlers and vessel stowage professionals are standing by – ready to find the best solution for you. Add a global network of accredited agents, plus a flexible, determined approach and it's easy to see why we're so tried and trusted in the shipping world.



Regulated Agent for
Aviation Security

25 OF EXPERTISE YEARS

As one of the most respected forwarders in specialist out of gauge cargo, we are experts in solving the big shipping problems. With over 25 years of knowledge and understanding across our group, we've built up a wealth of unrivalled expertise and pride ourselves on handling the most challenging, time-critical deliveries.

From start to finish, we'll work with you to plan ahead, saving you time and money before your shipment even reaches the starting line. Think of us more as logistics advisors than order takers. We'll be on hand throughout to deliver safe, swift solutions that respect the environment, bringing a global understanding of the logistics world few can match. Our experts are ready to dismantle, assemble, pack, repack, consolidate and transport awkward, heavy and supersize cargoes. While our independent surveyors, cargo handlers and vessel stowage professionals are standing by – ready to find the best solution for you. Add a global network of accredited agents, plus a flexible, determined approach and it's easy to see why we're so tried and trusted in the shipping world.



Regulated Agent for
Aviation Security



ONE
BIG
GLOBAL
TEAM

Connecting the world

We're far from a virtual operation in an anonymous office. We're real people who love to roll our sleeves up and get stuck in. We work together as one big global team, connecting the world across a wide range of unique facilities.

Solid foundations

- Our own headquarters and vast logistics centre
- State-of-the-art 10,000sqm indoor packing and storage facility
- Strategically located offices in key UK ports and the Middle East
- Carefully selected, trusted partners across the globe
- Expert logistics advisors, not just order takers.

The tools to match

- Our own flat racks, platforms, open tops and mafis
- Our own fleet of lifting and loading equipment
- All the equipment needed for the very best, seamless, door-to-door service.

Of course, global logistics is not just about the physical world. Our Electronic Data Interchange (EDI) software seamlessly integrates with industry standard interfaces and many more applications besides. Giving access to the right information without delay, it can also send and receive bookings, B/L instructions, advanced shipping notices and container status messages. Meanwhile, our own system has an export shipping rates matrix, able to give you a quote in just two hours.



HASSLE-FREE SOLUTIONS

Breakbulk & Out of Gauge Cargo

Our abnormal loads service covers all kinds of out of gauge and breakbulk shipments. So much so, we've become a leading specialist in big, complex cargo shipping. We use specialised container equipment such as flat racks, platforms and open top containers, versatile enough to carry the bulk of out of gauge movements. With a staggering payload capacity of up to 52 tonnes on certain trade lanes, our vast fleet of 40ft flat racks deliver a seamless, reliable service, no matter what the load. So we're not happy simply being a world-renowned freight forwarder. We're fast developing into a leading provider of specialist equipment.

Containerised Freight

Thanks to our NVOCC contracts with major shipping lines, we offer weekly Full Container Load (FCL) services to most destinations around the world, including General Purpose, High Cube, Flat Rack, Open Top, Platform and Refrigerated containers.

Should you need to send less than container load shipments (LCL), we continuously receive shipments at our Aberdeen, Birmingham, London (East and West), Leeds and Manchester depots. We also offer regular, dedicated LCL services to most global destinations and freight forwarding services to some of the toughest to reach parts of the world. So if you're looking to cut down costs and delivery times, look no further.

Heavy Lift & Chartering

We love a challenge. So however big, complex or awkward your project cargo, we'll find a way to move it quickly and safely, from one tonne bulk bags to 1600 tonne tandem lifts. Factory Relocations, Oil & Energy, Mining and Industrial Projects are something of a speciality.

We're strong in chartering too – operating high volume charter services to and from Europe, Africa and the Middle East. Vessels can be chartered per trip, or on a time chartered basis, from short sea to deep sea movements. Moving just about any cargo to any destination, we're the only sea freight forwarder you need.

Air Freight

We've been developing our air freight experience and building great relationships with international carriers around the world. We've also honed our customer experience to perfection, offering a full, market-leading logistics package. All delivered by industry experts and supported by transparent, leading-edge information management.

World-class service, worldwide

- Wide range of time-defined and specialist services
- All cargo shipment types, from express courier and hand deliveries to heavy lift and air charter
- Choice of standard connections and fixed schedules
- Air freight charters, arranged to fit your exact needs
- Renowned trade buying rates for competitive pricing
- Door-to-door services to any destination in the world.

EXPORT PACKING

Expert packing

Our highly experienced in-house packing team will take every care to protect your precious cargo. Better still, we can design and create bespoke packing cases of any shape and any size.

We're always thinking about the next stage of delivery – and the one after that. So every packing design includes exactly the right kind of lifting lugs, lashing points and other points of lifting on and off ship or aircraft. Whatever it takes, we'll make sure the inside of your case has all the protection your cargo needs, from lashing and timber bracing, to blocking and anti-crushing.

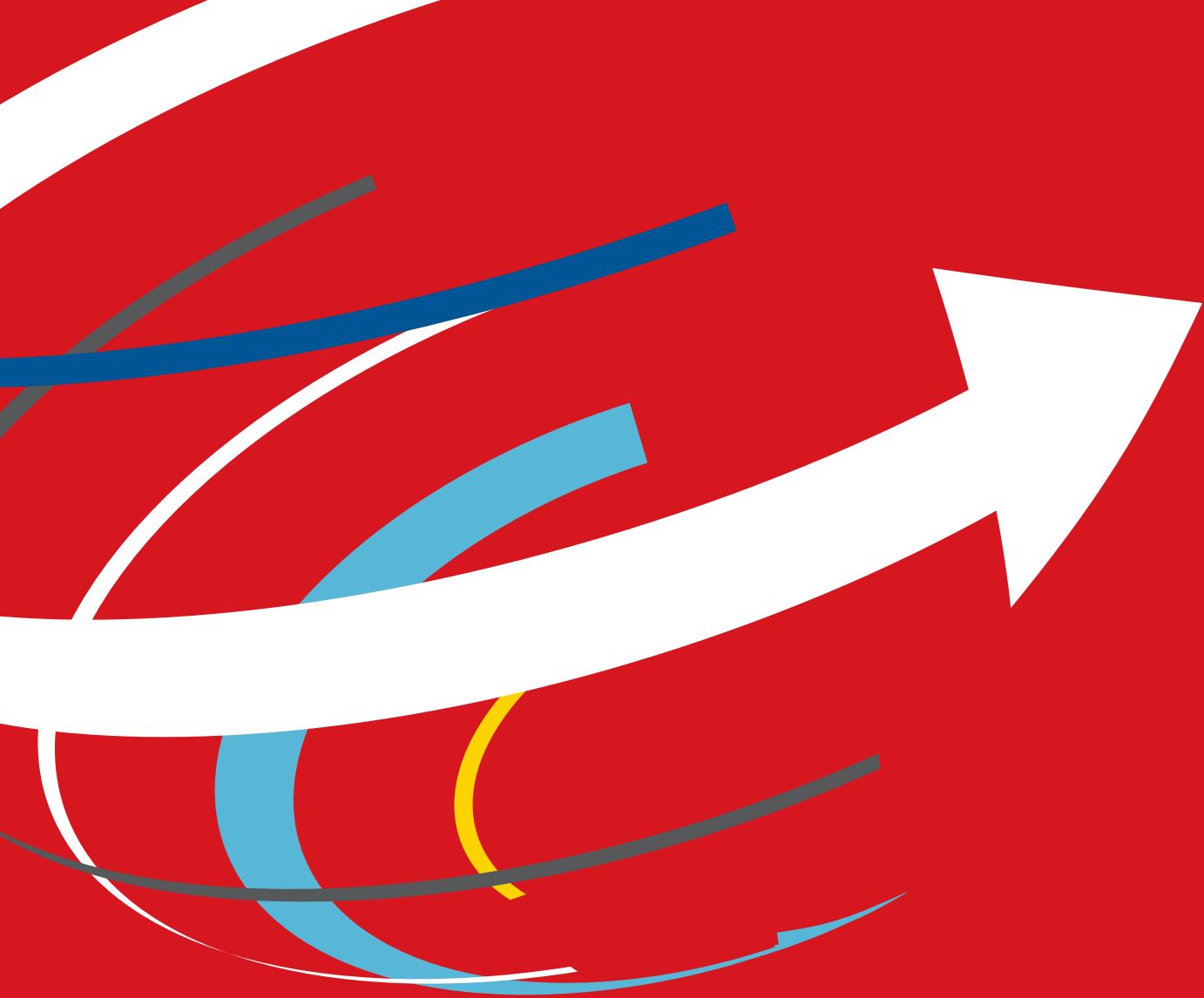
Leave a smaller footprint

We're responsible people here at Allseas. We care about the effect our work has on the environment, so we don't just think big, we think green in everything we do. For example, we're removing some of our greenhouse emissions by helping the Woodland Trust through its Woodland Carbon project. Together we're creating 600m² of new native woodland in the UK – enough to remove at least 24 tonnes of CO₂.

It's all part of a strategic programme to cut down emissions wherever we can. In fact, we've spent years building up our environmental expertise across land, sea and air.

We work quickly, safely and efficiently, always in the most carbon-effective way, right down to the local, sustainable timber we use for our packing cases. So whatever your ethical or environmental policies, we'll stick to them to the letter, even offering advice where and when you need it.

If you're looking to reduce your footprint, we'll find the greenest solution from start to finish.



T: + 44 (0)330 555 5555
E: info@allseasglobal.com
allseasglobal.com



Regulated Agent for
Aviation Security